

Inspirations in steel 2020



© raumleiter/Zug Estates, AG

forster





Forster Profile Systems Ltd

Forster Profile Systems Ltd, founded in 1874, develops and produces high-quality steel and stainless steel profiles for doors, windows and facades and has established itself as an expert for safety and fire protection solutions.

Forster knows how to exploit the advantages of steel as a material for the construction industry and offers a correspondingly energy-efficient, high-performance and durable product portfolio for indoor and outdoor applications. From public buildings where long-term functionality and safety are paramount, to modern residential and office buildings that require transparency and thermal insulation, to historic buildings that need to be renovated as faithfully as possible with a narrow view – Forster offers the right solution.

Profile systems in steel and stainless steel
Safe, stable, durable, 100% recyclable

Zuiderzeemuseum, The Netherlands
Thermally insulated glazings
forster unico XS

Title image:
Aglaya, Switzerland
Fire-resistant balcony glazing surround
forster unico

Sustainability	5
forster unico XS	6
For thermally insulated windows and glazing	
forster unico	10
Thermal insulated external door	
forster unico	11
External fire protection fire-resistant door EI30	
forster fuego light	12
Product range extension: Sheet metal door EI30	
forster fuego light	13
Flush-mounted glass panels EI30/EI60	
forster fuego light	14
Sliding doors for fire/smoke protection EI30/RS	
forster fuego light	15
Fire-resistant doors Burglar protection RC2/RC3	
forster fuego light	16
EI30/RS Anti-finger-trap door	
forster fuego light	17
Butt-joint glazing Glass-to-glass joint EI30/EI60	
forster thermfix vario	19
Fire-resistant panels/corner designs EI30/EI60	
forster thermfix vario Hi	20
Thermal insulation passive-house phA	
forster omnia	22
Thermally insulated doors	
3D-adjustable screw-on hinges	23
For all Forster door systems	

Sustainability

Sustainability at Forster

The issues of sustainability and respect for the environment have never before been so present in society, politics and industry as they are today. However, Forster Profile Systems Ltd has been making a contribution for a long time: its internal processes ensure that the resources used are utilised as sparingly as possible, and it develops products which, at the end of the building's service life, are largely – if not completely – returned to the material cycle and can be reused accordingly.

Company certificate

Environmental management system ISO 14001

Products

- The systems forster unico, forster presto, forster thermfix vario, and forster omnia are made of 100 % steel
- High thermal insulation and thus reduced energy consumption
- 100 % recyclable without loss of quality

Steel – the recycling world champion

- Ecological: 100 % recyclable and thus continuously reusable. Low grey energy content.
- Economical: low material input thanks to excellent static values
- Durable: an above-average service life even under high stress



*Aglaya, Switzerland
Fire-resistant balcony glazing surround
forster unico*



forsterunico®XS

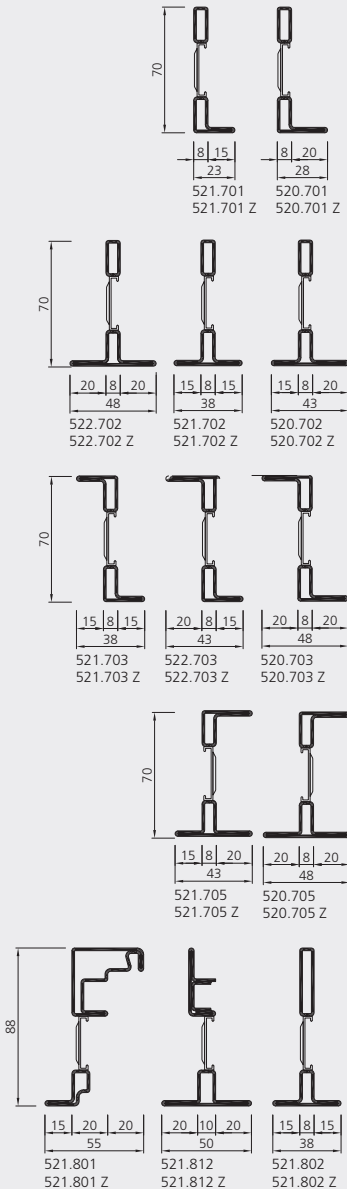
forster unico XS

23 mm view for thermally insulated windows and glazing

With the system extension forster unico XS, thermally insulated window elements and fixed glazing with slender views are possible in a wide range of applications. The absorption of fillings up to 60mm enables the lowest U-values as well as excellent sound insulation values.

The filigree profile construction made of 100 % steel is ideal for the renovation of old buildings, historic buildings as well as modern glass buildings.

The single and double leaf windows also come with **burglary-resistance RC2**.

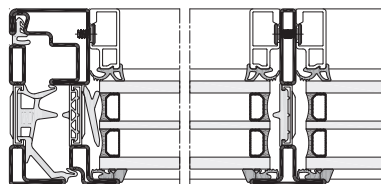


Technical details

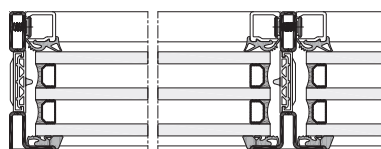
Material options	Bright steel and continuously galvanised steel
Face width	Single and double leaf casements from 55 mm Fixed glazing from 23 mm
Dimensions	Leaf height: 560 up to 2440 mm/RC2: 560 up to 2440 mm Panel sizes 1600 x 3000 mm, with special fittings upon request Leaf width: 400 to 1440 mm/RC2: 451 to 1440 mm Smallest permitted leaf size: 400 x 560 mm (w x h) Smallest permitted leaf size RC2: 451 x 560 mm (w x h) Maximum dimension for fixed glazing: 2800 x 2500 mm (w x h)
Performance specifications	Thermal insulation: U_w -values up to 0.84 W/(m ² ·K) Fixed glazing up to 0.80 W/(m ² ·K) Enhanced tightness from three circumferential sealing layers Filling elements up to 60 mm (triple insulation glazing) All system applications comply with EN 14351-1 (CE marking) Sound insulation values up to $R_{wV} = 47$ dB
System properties	Concealed system for both single and double casements of side-hung and turn/tilt windows, for leaf weighing up to 100kg, 150kg on request Outward opening, top-hung and pivoting windows on request Stove enamelling or powder coating with no temperature restrictions Glazing beads in aluminium 15-50mm and in steel 15 and 19 mm Wet glazing, stress-relieved and drained Dry glazing with EPDM seals

MINERGIE®

NEW: slim windows now also with dry glazing **dry glazing**



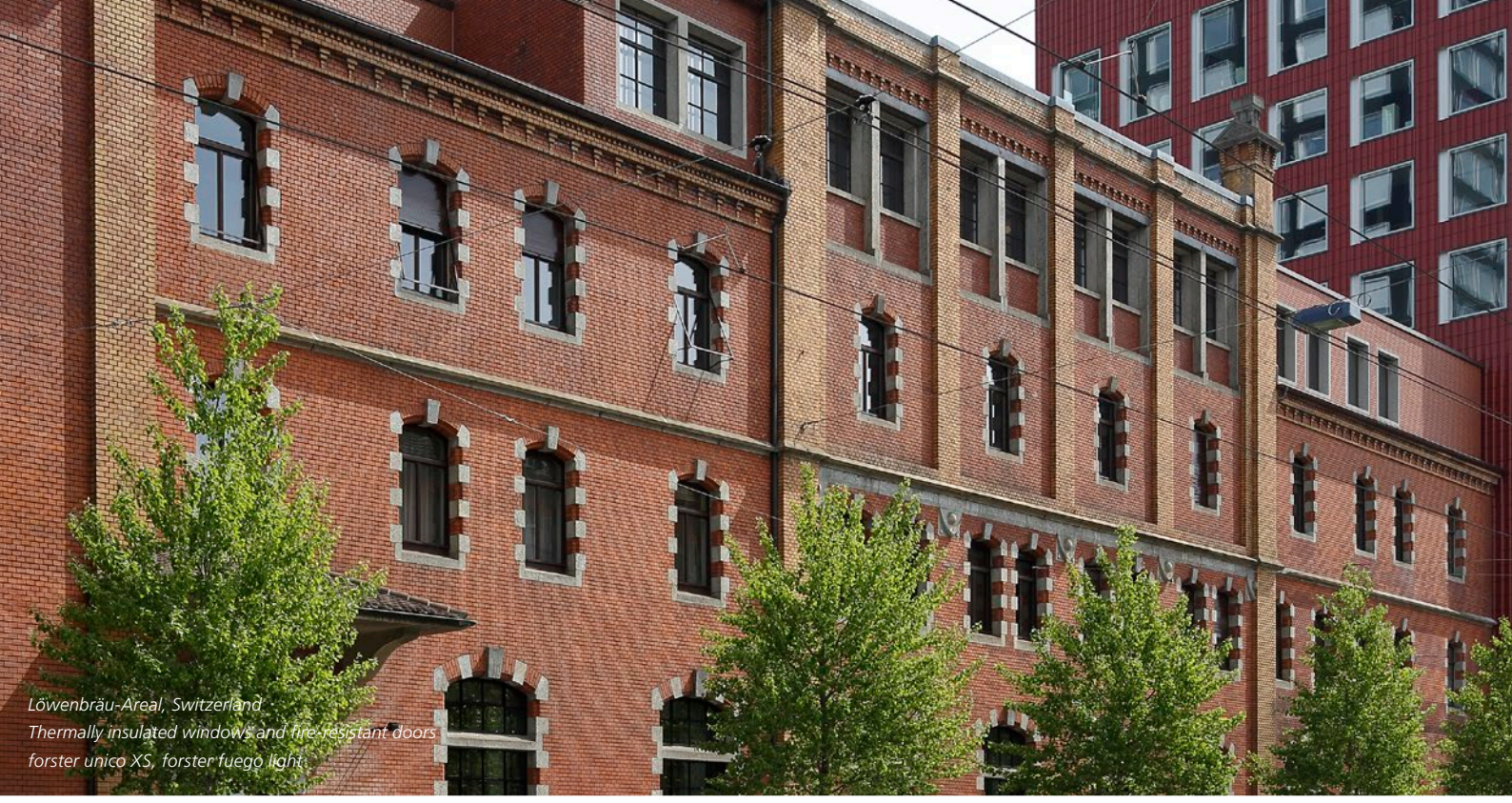
Thermally insulated windows with EPDM seals



Thermally insulated glazing with EPDM seals



3-level view
(also available as reversible windows)



*Löwenbräu-Areal, Switzerland
Thermally insulated windows and fire-resistant doors
forster unico XS, forster fuego light*



*Old House Hunting, Italy
Thermals insulated doors and windows
forster unico, forster unico XS*



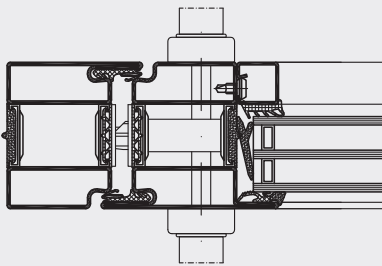


forster unico Thermal insulated external door

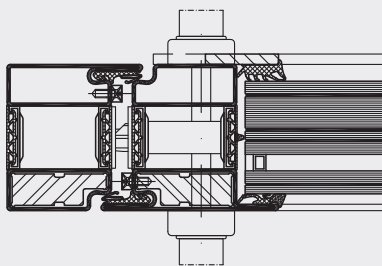
forster unico is the thermal insulated profile system with fittings and accessories for single and double leaf panel doors, windows, and exterior glazing. The basic profiles are made of 100 % recyclable steel and, unlike conventional insulated systems, do not contain any plastic insulators.

NEW: 3D-adjustable screw-on hinge available for forster unico.

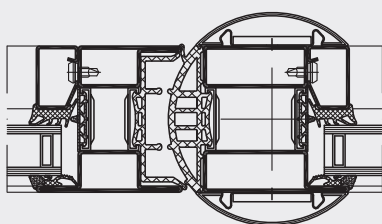
Thermal insulated door



Bullet-proof door FB4-NS



Finger protection door on tape side



Doors and glazing

Material options	Steel, galvanized steel, stainless steel
Performance specifications *	Sound insulation up to R_w 46 dB, depending on glass selection
System properties	100 % steel, 100 % recyclable
	Construction depth 70 mm
	Body measurements 20 mm/30 mm/50 mm
	Filling elements up to 54.5 mm

Doors

Performance specifications *	Standard door from U_D 1.2 W/(m ² ·K) Minergie certified
Design variants	Burglar-resistance RC2/RC3 Sheet metal door, panels, frame extensions Bullet proof up to FB4 Continuous function according to EN 1191: 200'000/1'000'000 cycles Rain impermeability according to EN 12208, class 3A Air permeability according to EN 12207, class 3 Resistance to wind load according to EN 12210, class C3/B3 Barrier-free according to DIN 18040 Finger protection door
System properties	Forster system fittings, integrated door closer (ITS) optional Available as emergency door with anti-panic push bar, full panic Surface treatments powder coating/wet paint/hot-dip galvanised

* refer to country-specific approvals

forster unico

External fire protection fire-resistant door EI30



forsterunico.

The forster unico system for thermally insulated doors and windows in outdoor areas is now EI30 fire tested and meets the requirements for fire protection.

Multipoint locking systems matched to the system ensure efficient production. These also allow for an anti-panic escape door.

NEW:

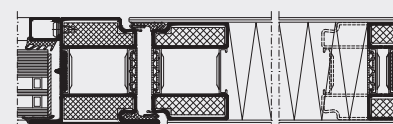
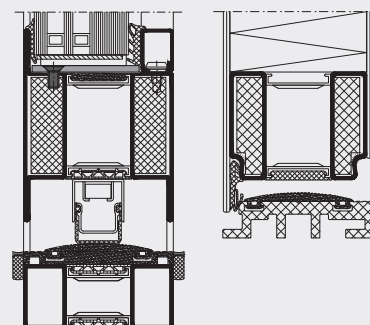
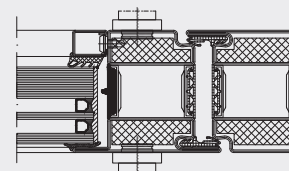
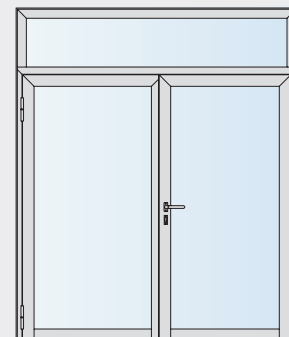
Flush-mounted solid sheet door

Door with buffer threshold

Frame widening on three sides up to max. 750 mm

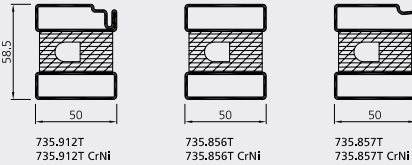
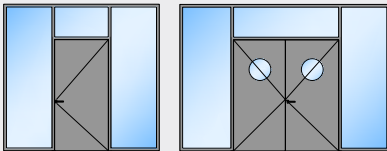
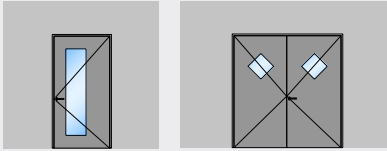
Technical details

Material options	Continuously galvanized steel
Dimensions	Single leaf door: 1370 × 3010 mm (w × h) light clearance Double leaf door: 2700 × 2310 mm (w × h) light clearance Glazing: Height 5000 mm (CH) and 4000 mm (EU), width infinite Frame extension on three sides up to max. 750 mm
Performance specifications	EI30 according to EN 1634-1 U _D -values up to 1.5 W/(m ² ·K) Max. leaf weight 360 kg Rain impermeability according to EN 12208 class 3A Air permeability according to EN 12207 class 3 Resistance to wind load according to EN 12210 class C3/B3 Certified according to EN 16034 and EN 14351-1 (CE marking) Barrier-free floor threshold according to DIN 18040 Fillings: Double glazed units U _g 1.1 W/(m ² ·K) Fillings: Triple glazed units U _g 0.9 W/(m ² ·K) Smoke impermeability according to EN 1634-3 S _a /S ₂₀₀ Continuous function according to EN 16034 C5 (200'000 cycles) Tested forster unico EI30 window available on request
System properties	Forster system fittings Available as an escape door with anti-panic pushbar, partial anti-panic function

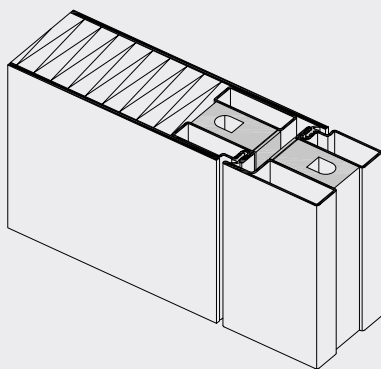
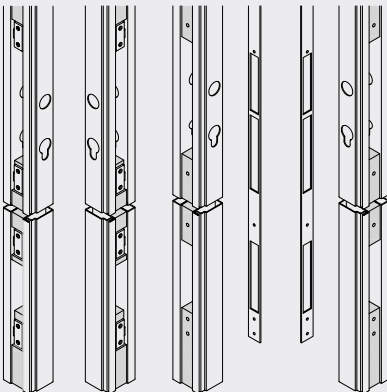




forsterfuegolight



Prepared profiles for multiple locking systems



forster fuego light

Product range extension: Sheet metal door EI30

The flush-mounted, metal-plated fire door forster fuego light EI30 can be built as a single-leaf or double-leaf variant and equipped with an anti-panic function as required. Installation is also possible in transparent EI30/EI60 fixed glazing.

Round and square glass cut-outs can be integrated as an option. The range of system-adjusted fittings, attractive stainless steel handles, slim roller hinges, concealed barrel hinges and integrated door locking systems guarantee a high-quality appearance.

CHARACTERISTICS

- Steel/stainless steel sheet 2.5-3 mm welded/screwed without chamfers
- No rungs in the wing required
- Glass size viewing window max. 2.1 m²
- Rock wool ≥ 90 kg/m³
- Prepared profiles for multiple locking systems
- Threshold-/barrier-free, also for anti-panic (RC with pushbar)
- Concealed hinges and door closers

Technical data without RC

Material options	Steel ZM and stainless steel 1.4301
Dimensions	1-leaf: max. 1400×2800 mm (w×h) clear passage 2-leaf: max. 2600×2800 mm (w×h) clear passage
System properties	Antipanic according to EN 179/EN 1125 Mortise lock with additional locking, partial panic and full panic Multipoint locking (SVP), partial panic

Technical data RC2

Material options	Steel ZM and stainless steel 1.4301
Dimensions	1-leaf: max. 1400×2800 mm (w×h) clear passage 2-leaf: max. 2600×2800 mm (w×h) clear passage
Performance specifications *	EI30 for 1- and 2-leaf doors acc. to EN 1627 Threshold air max. 7 mm Viewing window EI30, P4A/P6B
System properties	Antipanic according to EN 179/EN 1125 Mortise lock with additional locking, partial panic and full panic Multipoint locking (SVP), partial panic

Technical data RC3

Material options	Steel ZM and stainless steel 1.4301
Dimensions	1-leaf: max. 1400×2500 mm (w×h) clear passage 2-leaf: max. 2600×2500 mm (w×h) clear passage
Performance specifications *	EI30 for 1- and 2-leaf doors acc. to EN 1627 Threshold air max. 7 mm Viewing window EI30, P5A/P8B
System properties	Antipanic according to EN 179/EN 1125 Multipoint locking (SVP), partial panic

* refer to country-specific approvals

forster fuego light

Flush-mounted glass panels

EI30/EI60



forsterfuego®light

Glass as a large-area design element has become an integral part of modern architecture. Transparency and open interior design can be elegantly achieved with slim steel solutions.

The flush glass panels combined with the proven forster fuego light fire protection system EI30 and EI60 are the perfect solution when aesthetics and fire protection requirements have to be equally met.

FEATURES

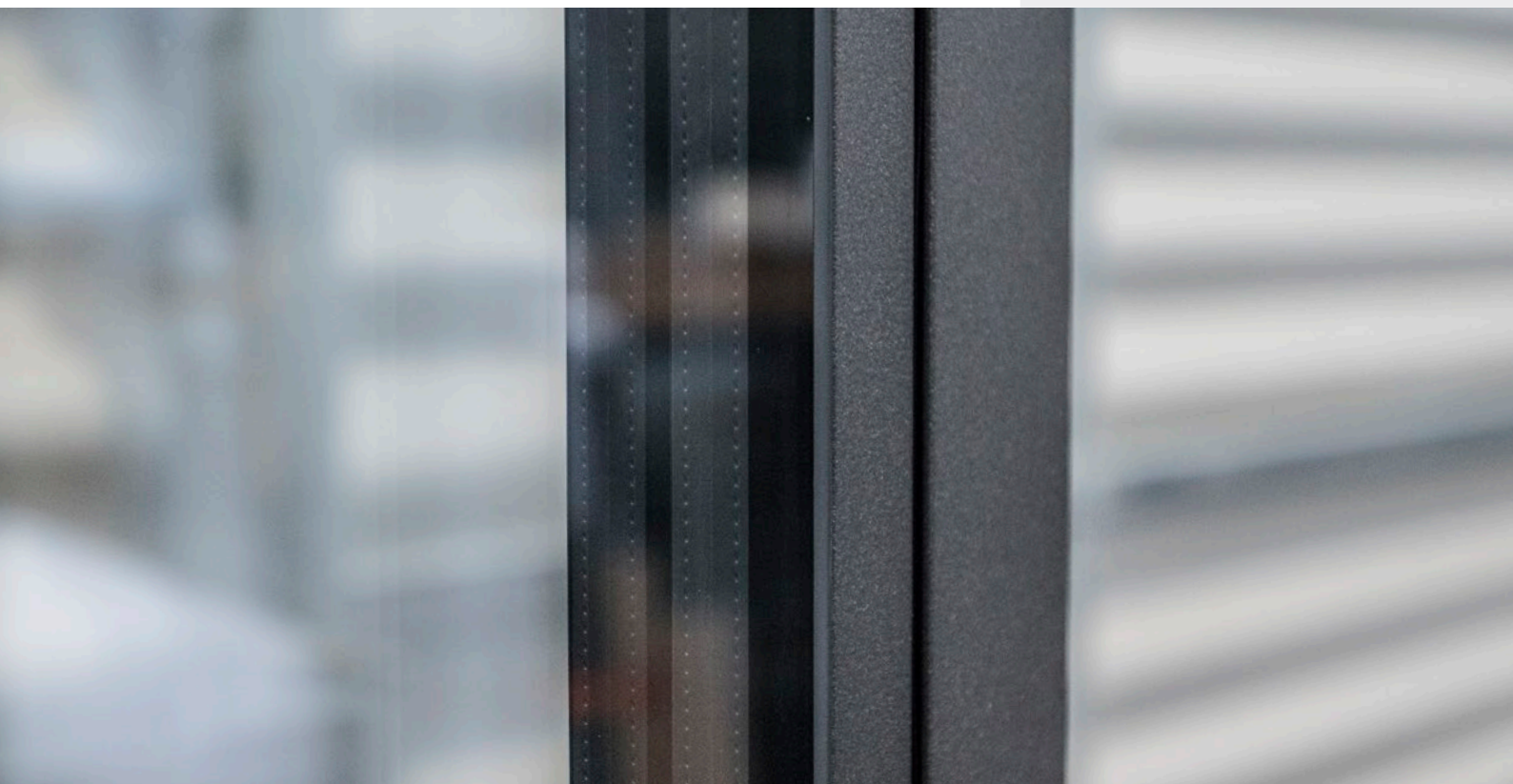
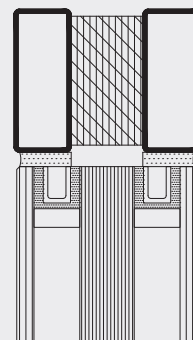
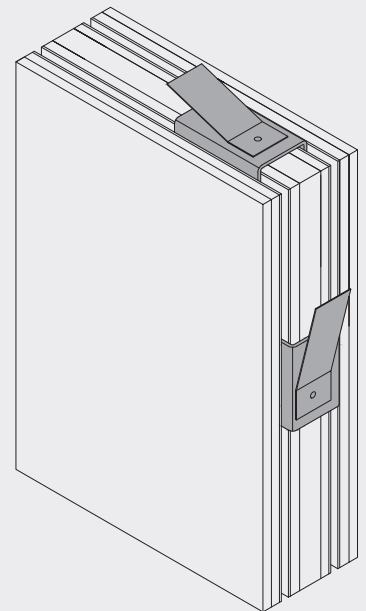
- Flush-mounted design
- A glass edge seal (25 mm) is possible in a diverse range of colours
- Quick mounting thanks to patented clip system
- Ideal for combining with the Forster wood panel solution

Technical details

Material options	Steel ZM and stainless steel 1.4301
Dimensions*	Single leaf door: max. 1400 × 2390 mm (w × h) light clearance Double leaf door: max. 2320 × 2390 mm (w × h) light clearance Glazing up to a height of 3 m
Performance specifications**	EI30 for single and double leaf doors EI60 glazing Proof of fire protection available
System properties	Patented clip system for the application of glass panels

* observe permissible glass dimensions

** refer to country-specific approvals



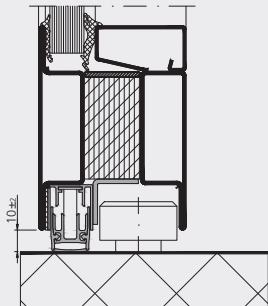


Cantonal hospital Münsterlingen, Switzerland
 Fire resistant sliding doors EI30
 forster fuego light

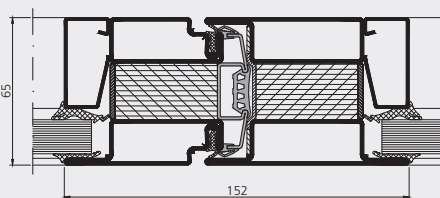


forsterfuego.light

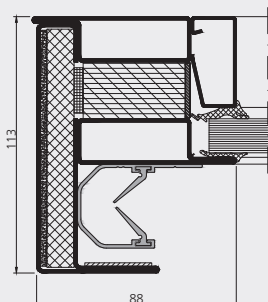
Automatic drop seal



Middle part of the sliding leaf



Labyrinth seal



forster fuego light

Sliding doors for fire/smoke protection EI30/RS with increased impermeability

A sliding door is a space-saving construction that facilitates the flow of people and goods. The forster fuego light fire protection sliding door EI₂₃₀/C5/S₂₀₀ with a four-sided sealing level is the ideal solution when transparency, fire protection, increased tightness and special requirements for the air pressure conditions are required.

FEATURES

- Single and double leaf doors
- Barrier-free access, wheelchair and hospital bed access
- Four-sided sealing (smoke-tight according to EN 1634-3)
- Installed in massive structure and light construction walls as well as glazing
- Diverse drives permitted

Technical details

Material options	Steel ZM (stainless steel 1.4301 on request)
Dimensions	Single leaf door: max. 1380×2500 mm (w×h) light clearance Double leaf door: max. 2600×2500 mm (w×h) light clearance
Performance specifications *	EI30 for single and double leaf doors according to EN 16034 Smoke-tight according to EN 1634-3 Increased impermeability by smoke-tight verification according to DIN 18095
System properties	Barrier-free Approval Z-6.20-2181

* refer to country-specific approvals

forster fuego light

Fire-resistant doors

Burglar protection RC2/RC3



forsterfuegolight

If the security requirement according to EN 1627 is not covered by fire protection alone, the burglar-resistant door forster fuego light RC2 and RC3 supplements the security package for every building. The slim steel-glass combination convinces not only with its attractive appearance and transparency but also with its durability and robustness. It can therefore be used both in residential and commercial buildings or in public buildings with an increased risk of burglary.

Combinations of fire protection, smoke protection and anti-panic have been tested.

DESIGN VARIANTS

- Pathway/wheelchair accessible, even with anti-panic function
- Concealed hinges and door closers
- Glazing variant RC2 tested for anti-panic with P6B according to EN SN 1627
- RC2 also tested without multipoint locking
- Self-locking inactive leaf
- Inward and outwards opening doors
- Glass from different manufacturers tested
- Metal panels EI30
- Sheet metal door EI30
- Glazing EI30/EI60

Technical details RC2

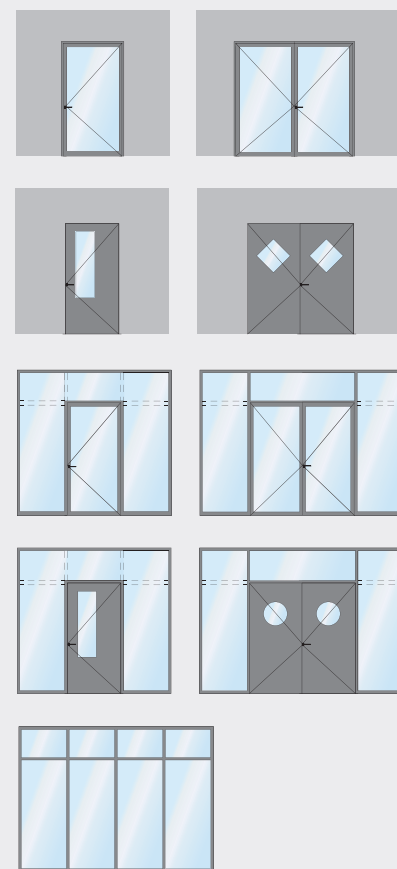
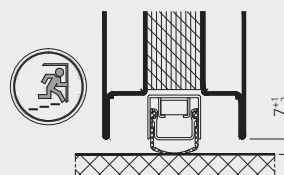
Material options	Steel ZM and stainless steel 1.4301
Dimensions	Single leaf door: max. 1400×3000 mm (w×h) light clearance Double leaf door: max. 2830×3000 mm (w×h) light clearance
Performance specifications *	EI30 for single and double leaf doors according to EN 1627 EI30/EI60/P5A glazing: max. height: 4000 mm and max. width: no restriction
System properties	Anti-panic function according to EN179/EN1125 Active and inactive leaf/glazing P6B Mortise lock with additional locking Prepared profiles for mortise locks

Technical details RC3

Material options	Steel ZM and stainless steel 1.4301
Dimensions	Single leaf door: max. 1400×2500 mm (w×h) light clearance Double leaf door: max. 2830×2500 mm (w×h) light clearance
Performance specifications *	EI30 for single and double leaf doors according to EN 1627 EI30/EI60/P5A glazing: max. height: 4000 mm and max. width: no restriction
System properties	Anti-panic function according to EN179/EN1125 Active leaf/Polycarbonate glazing P8B Security multipoint locking Self-locking Prepared profiles for security multipoint locking

* refer to country-specific approvals

Barrier-free accessibility



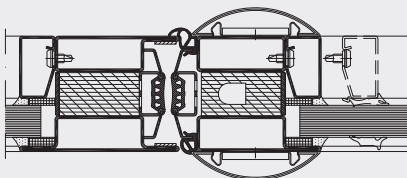
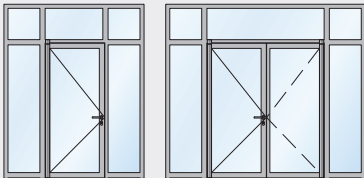
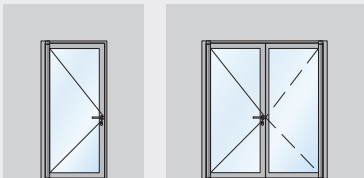
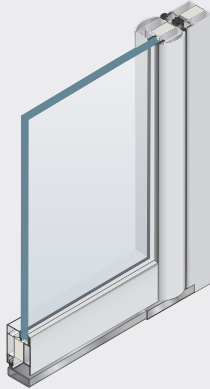


forsterfuego®light

forster fuego light EI30/RS Anti-finger-trap door

Barrier-free and finger trap protection in one. Clip-on half-round shell profiles prevent the clamping of fingers at the secondary closing edge as well as pinching and shearing points according to DIN 18650/EN 16005.

The hinge bearings used are designed for a maximum sash weight of 300 kg. They are ideally suited for use in highly frequented doors such as in shopping centres, hospitals or schools.



Technical details

Material options	Galvanised steel (ZM)
Dimensions	Single leaf door max. 1400 x 3000 mm (wxh) light clearance Double leaf door max. 2830 x 3000 mm (wxh) light clearance
Performance specifications *	Fittings designed for the system, also for emergency doors according to EN 179 and EN 1125 Leaf weight: max. 300 kg Integrated, invisible door closing systems EU classification: EI ₂ 30/C5/S ₂₀₀ according to EN 13501-2 Germany: T30/F30 according to DIN 4102 and RS according to DIN 18095 Finger-trap protection DIN 18650/EN 16005 ≤ 8 mm (inner edge) Barrier-free DIN 18040: no threshold, no stumbling (0 mm)
System properties	Slim designs (profiles from 30 mm) Rational production and assembly thanks to coordinated system fittings and accessories Elegant stainless steel handles and slim barrel hinges Large selection of approved fire protection glasses and panels Dry or wet glazing

* refer to country-specific approvals

forster fuego light

Butt-joint glazing

Glass-to-glass joint EI30/EI60

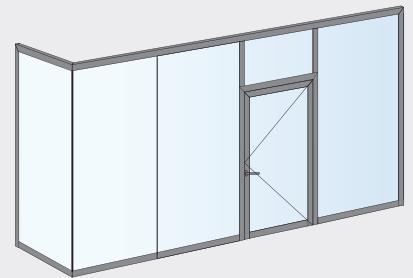
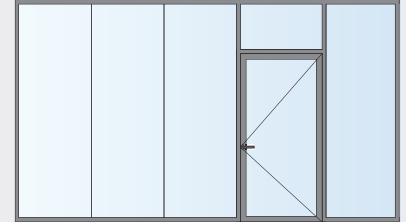


forsterfuego®light

The butt joint glazing forster fuego light allows generous glass surfaces with high safety (fire protection EI30/EI60).

The glass elements can be joined together with minimal joints and make **storey-high elements up to 4000 mm** possible.

- Profiles: forster fuego light standard profiles
- Conception: Glazing with horizontal forster fuego light retaining profiles on the floor and ceiling.
For vertical joints, no additional mullions necessary



Technical details

Material options	Steel and stainless steel
Glass types	Available in various thicknesses and measurements for EI30/EI60 Pilkington: Pyrostop Line Vetrotech: Contraflam Structure AGC: Pyrobel T
Dimensions	Glazing in fire protection class EI30: Amax. 6.3 m ² Glazing in fire protection class EI60: Amax. 6.2 m ²
Performance specifications *	EI30 and EI60 glazed corners, with and without ISO requirements
System properties	Installation of fire doors possible Tested and approved for corner glazing, 90° to 270° 90° to 180° approved in France

* refer to country-specific approvals



Raiffeisenbank Saxon, Switzerland
Fire-rated glazings, butt joint glazing
and fire-rated doors
forster fuego light



Villa, The Netherlands

*Fixed glazings, sloped glazings and lift-up sliding doors
forster unico, forster thermfix vario*

Picture source: Tim Van de Velde, Brussels

forster thermfix vario

Fire-resistant panels/corner designs

EI30/EI60 for facades



forsterthermfix vario

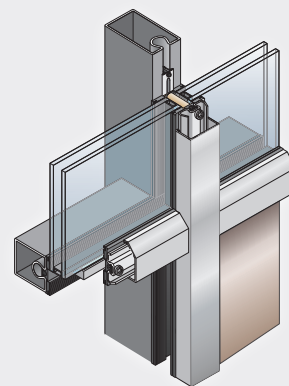
The system forster thermfix vario is a thermal insulated mullion and transom construction, based around a dry glazing security application system for fire, burglar and bullet protection. Corner designs tested in fire protection and bonded glass to panels up to a size of 1500 × 3000 mm create additional applications for all facades with high heat insulation and in line with safety requirements.

The internal side profiles made from steel or stainless steel take the load bearing function. Thanks to excellent static properties, impressive field sizes are possible with very narrow profile face widths of only 45 mm.

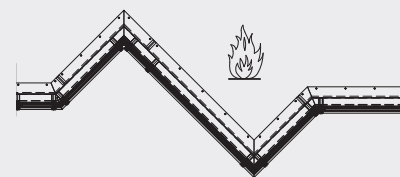
Thermally insulated doors and windows from the systems forster unico and forster unico XS can be integrated into the facade.

Production and assembly are easy. Clever processing tools save time; helpful positioning markings on the seals increase precision.

Steel glass construction or steel-glass panels



Corner designs for fire protection



Technical details

Material options	Steel, stainless steel, grinded, grain 220-240 Combination of steel/stainless steel/aluminium
Performance specifications*	Thermal insulation U_f -value from 1.0 W/(m ² ·K) Classification from CE-tests according to EN 13830: <ul style="list-style-type: none"> • Resistance to wind load according to EN 12179: 3 kN, safety load 4.5 kN • Rain impermeability according to EN 12155: RE1200 • Air permeability according to EN 12153: AE (>600) • Sound insulation (EN ISO 140-3): R_w up to 45 dB • Impact-resistance according to EN 14019: E5 / I5 Burglary-resistance according to EN 1627-1630: RC2/RC3 Bullet proof according to EN 1522-1523: FB4 NS Tested glass sheeting panels with a maximum dimension of 1500 × 3000 mm EI30 and EI60, are also possible (can be printed or enamelled) Corner building in class EI30 and EI60 Fire-resistance classification of construction products according to EN 13501-2: EI30, EI60, EI90, i<->o (E30/EW30, E60/EW60, E90) Reaction to fire of construction products acc. to EN 13501-1: Class E EI30: Proved combination of bullet-resistance according to EN 1522-1523 FB4 NS and burglary-resistance according to EN 1627-1630 RC2/RC3
System properties	Extremely slender face width 45 mm, individual profile and surface treatment Can be used over several storeys up to a height of 5000 mm Trouble-free assembly using mechanical T-joints Tools for positioning of clamping feet and seals with helpful markings

* refer to country-specific approvals



forsterthermfix varioHI



$U_f 0,49 \text{ W}/(\text{m}^2 \cdot \text{K})$



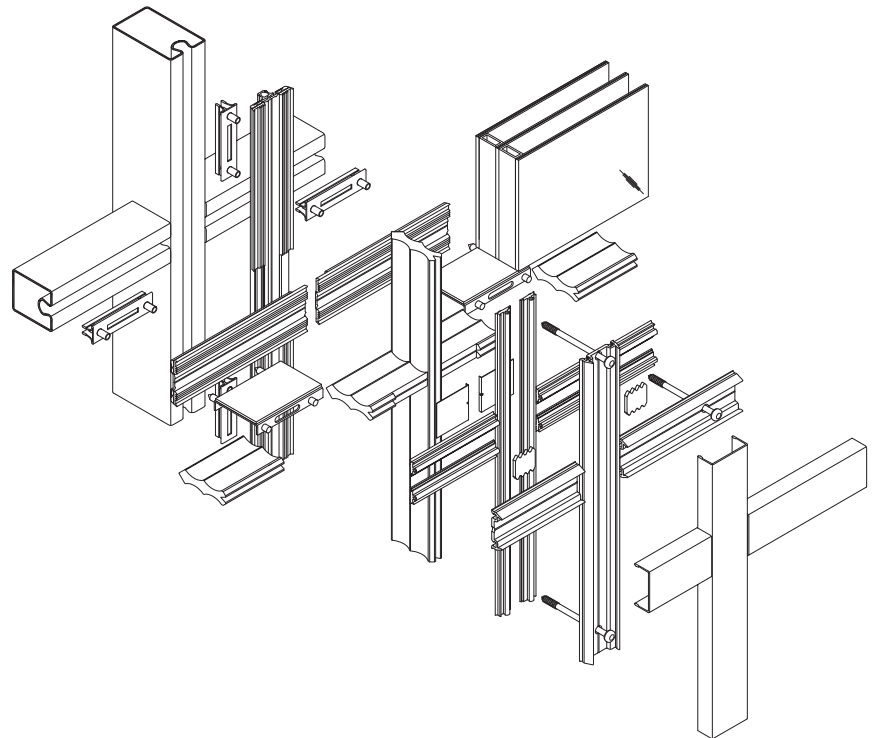
forster thermfix vario Hi Thermal insulation passive-house phA

The forster thermfix vario Hi system offers excellent thermal insulation at passive house level in efficiency class phA. Impressive field sizes can be realised that are only possible with a steel system. The certified passive house elements can optionally be constructed with slim 45 mm or 60 mm wide profiles.

The profile system is based on the standard mullion/transom construction from forster thermfix vario. As a result, many components can be used across systems. This guarantees an identical appearance of the facade, even if different requirements such as burglar resistance or fire protection are required in different building areas.

Production and assembly are even more efficient with new aluminium pressure bars. Cleverly designed processing tools save time, and the seals with position markers make processing even more safe and accurate.

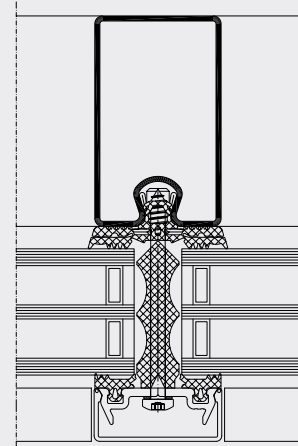
Ideal combination elements can be found in the forster unico and forster unico XS system, for example, for thermally insulated windows and doors.



Technical details

Material options	Steel, stainless steel, grinded, grain 220-240 Combination of steel/stainless steel/aluminium
Performance specifications*	Thermal insulation U_f -value from 0.49 W/(m ² ·K) U_{CW} -value 0.6 (with triple insulating glass U_g 0.5 on 1500 × 3000 mm) Classification from CE-tests according to EN 13830: <ul style="list-style-type: none">• Resistance to wind load according to EN 12179: 3 kN, safety load 4.5 kN• Rain impermeability according to EN 12155: RE1350• Air permeability according to EN 12153: AE (>600)• Impact-resistance according to EN 14019: E5 / I5
System properties	Extremely slender face width 45 mm, individual profile and surface treatment Trouble-free assembly using mechanical T-joints Aluminium pressure strips for convenient, efficient installation Tools for positioning of clamping feet and seals with helpful markings

* refer to country-specific approvals



Single-family house Breiter, Switzerland
Thermally insulated curtain wall,
mullion/transom construction
forster thermfix vario

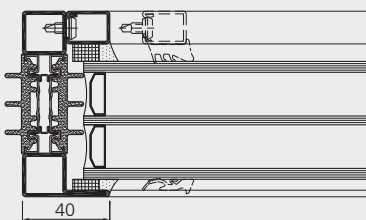
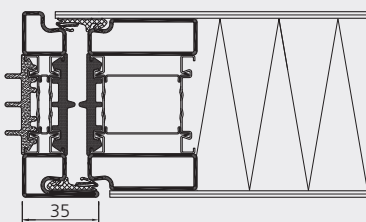
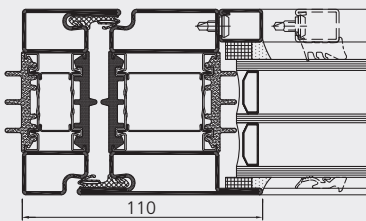
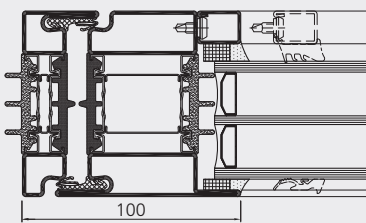
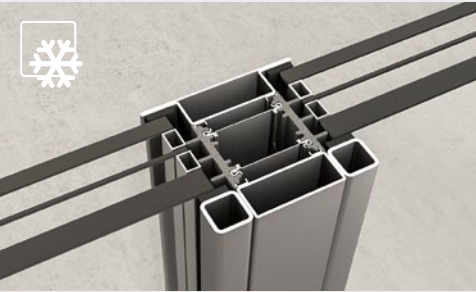


forsteromnia

forster omnia Thermally insulated doors

With a single profile system, doors and glazing can be designed with excellent thermal insulation. The unique, patented construction design allows tailor-made, modular solutions for indoor and outdoor applications.

The slim forster omnia profiles made of 100 % steel without additional insulators made of GFK or plastic are durable, completely recyclable and therefore particularly sustainable.



Technical details

Material options	Steel ZM 90
Performance specifications *	Sound insulation up to R_{w} 48 dB, depending on the glass
System properties	100 % steel, 100 % recyclable Construction depth 85 mm Body measurements 20 mm/30 mm/50 mm Filling elements up to 69.5 mm

Doors

Performance specifications *	Standard door from U_D 0.8 W/(m ² ·K) Fire-resistant door EI30 from U_D 1.0 W/(m ² ·K) Fire protection EI ₂ 30/C5/S ₂₀₀ (EN 16034) Burglary-resistance RC2/RC3
Dimensions	Clear passage single leaf: 1360 × 2691 mm (w × h), panel size 1400 × 2699 mm (w × h) Clear passage double leaf: 2670 × 2691 mm (w × h), panel size 1365 × 2699 mm (w × h)
System properties	Quick integration of fittings (clamped, screwed or welded) Possible conversion of doors due to simple wiring and exchangeable locking systems (electrification, change of tenant)

Glazing

Performance specifications *	U_w -value from 0.72 W/(m ² ·K) with triple insulating glass U_g 0.5 W/(m ² ·K), for a standard measurement of 1230 × 1480 mm (w × h) U_f 1.2 W/(m ² ·K) Fire protection EI30 (EN 1364) Burglary-resistance RC2/RC3 Bullet proof up to FB4 without additional plug-in modules
Dimensions	Height: 5000 mm Width: no restriction

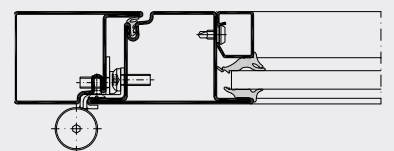
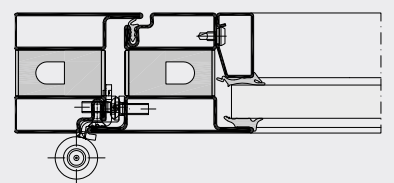
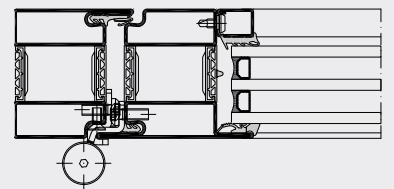
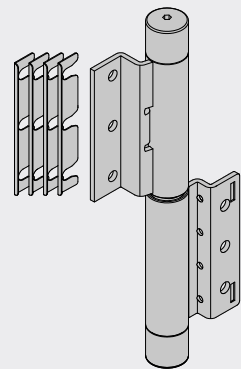
* refer to country-specific approvals



3D-adjustable screw-on hinges For all Forster door systems

NEW: 3D-adjustable stainless steel **screw-on hinges** for all Forster door systems

With 1 million cycles, the screw-on hinges have been successfully proven for the requirement of permanent function according to EN 1191 and classified according to EN 12400 with class 8. This corresponds to the highest possible stress on doors, such as those found in heavily frequented public buildings. The hinges are assigned to corrosion resistance class 4. These hinges are also suitable for doors that must be equipped with a swing door drive. The screw-on hinges are available in stainless steel.



Application areas

	forster fuego light	forster omnia	forster thermfix vario	forster thermfix light	forster unico	forster presto	forster norm
Safety							
Fire-resistant doors and glazing EI	•				•		
Sliding fire doors EI	•						
Fire-resistant facades EI			•				
Overhead fire-resistant glazing EI				•			
Fire-resistant windows EI					•		
Fire-resistant doors and glazing E/EW					•	•	
Fire-resistant facades E/EW			•				
Fire-resistant doors and smoke protection doors E30/E60/Sa/S₂₀₀ (RS)	•				•	•	
Fire-resistant walls E30/E60 (G30)					•	•	
Fire-resistant windows E/EW					•		
Burglar-resistant doors	•				•	•	
Burglar-resistant windows					•		
Burglar-resistant facades			•				
Burglar-resistant glazing	•				•	•	
Bullet-resistant doors					•		
Bullet-resistant windows					•		
Bullet-resistant facades			•				
Bullet-resistant glazing	•				•		
Thermal insulation							
Doors (also finger protection and lift-up sliding doors)		•			•		
Windows					•		
Fixed glazing		•			•		
Facades			•	•			
Overhead glazing				•			
Stainless steel systems							
Doors	•				•	•	
Windows					•		
Fixed glazing	•				•	•	
Facades			•	•			
Non-insulated systems							
Doors						•	•
Windows						•	•
Fixed glazing						•	•
refer to country-specific standards and approvals							

9912016/10068877/01-20